

TR Bifacial 72M 505-525 Watt

Tiling Ribbon (TR) Technology

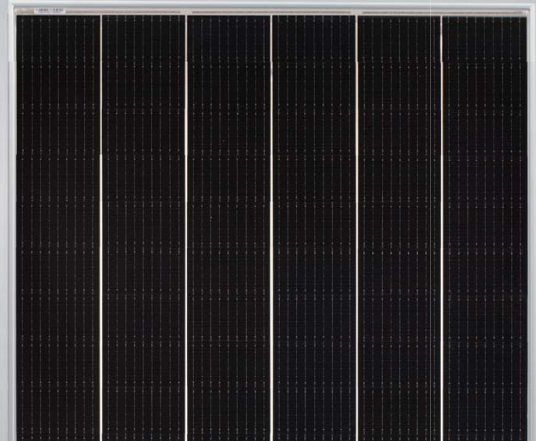
Positive power tolerance of 0~+3%

ISO9001:2015, ISO14001:2015, ISO45001:2018
certified factory

IEC61215, IEC61730 certified product

(Draft)

TIGER Pro



KEY FEATURES



TR technology + Half Cell

TR technology with Half cell aims to eliminate the cell gap to increase module efficiency (bi-facial up to 21.21%)



MBB instead of 5BB

MBB technology decreases the distance between bus bars and finger grid line which is benefit to power increase.



Higher lifetime Power Yield

2% first year degradation,
0.45% linear degradation



Best Warranty

12 year product warranty,
30 year linear power warranty



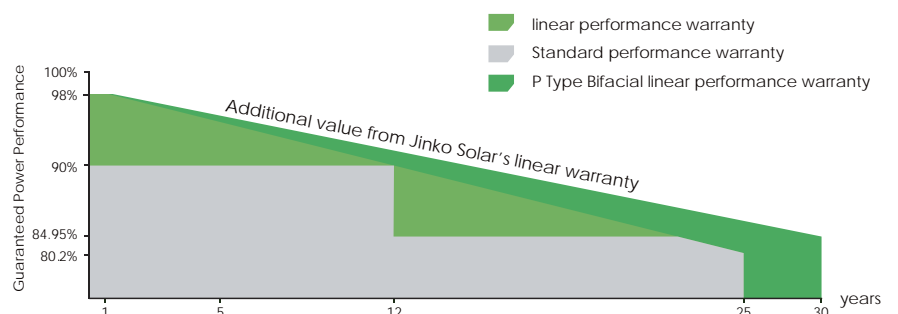
Strengthened Mechanical Support

5400 Pa snow load, 2400 Pa wind load

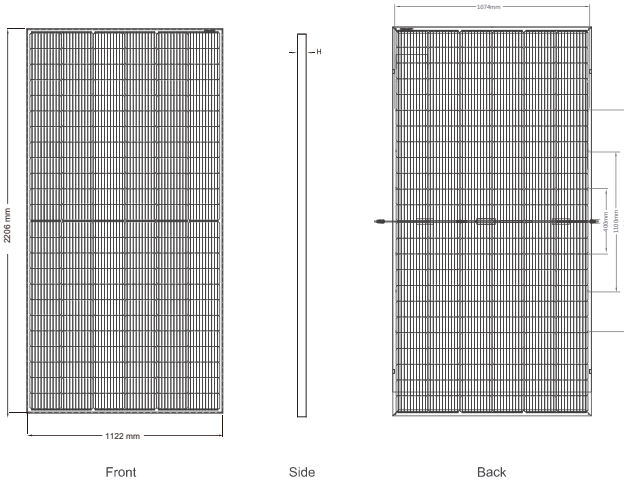


LINEAR PERFORMANCE WARRANTY

12 Year Product Warranty • 30 Year Linear Power Warranty
0.45% Annual Degradation Over 30 years



Engineering Drawings



Front

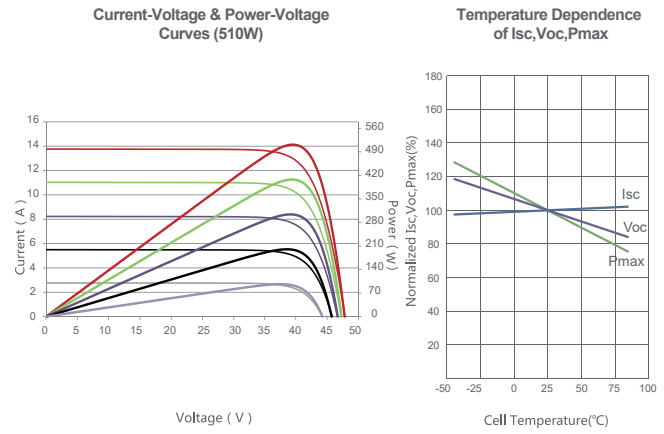
Side

Back



Length: ± 2 mm
Width: ± 2 mm
Height: ± 1 mm
Row Pitch: ± 2 mm

Electrical Performance & Temperature Dependence



Mechanical Characteristics

Cell Type	P type Mono-crystalline
No. of cells	144 (2×72)
Dimensions	2206×1122×35mm (86.85×44.17×1.38 inch)
Weight	28.2 kg (62.17 lbs)
Front Glass	3.2mm, Anti-Reflection Coating, High Transmission, Low Iron, Tempered Glass
Frame	Anodized Aluminium Alloy
Junction Box	IP67 Rated
Output Cables	TUV 1×4.0mm ² (+): 290mm, (-): 145mm or Customized Length

Packaging Configuration

(Two pallets = One stack)

31pcs/pallets, 62pcs/stack, 620pcs/ 40'HQ Container

SPECIFICATIONS

Module Type	JKM505M-7TL4-TV		JKM510M-7TL4-TV		JKM515M-7TL4-TV		JKM520M-7TL4-TV		JKM525M-7TL4-TV	
	STC	NOCT	STC	NOCT	STC	NOCT	STC	NOCT	STC	NOCT
Maximum Power (Pmax)	505Wp	376Wp	510Wp	379Wp	515Wp	383Wp	520Wp	387Wp	525Wp	391Wp
Maximum Power Voltage (Vmp)	41.50V	38.34V	41.60V	38.44V	41.70V	38.55V	41.80V	38.61V	41.90V	38.75V
Maximum Power Current (Imp)	12.17A	9.80A	12.26A	9.87A	12.35V	9.94A	12.44A	10.02A	12.53V	10.08A
Open-circuit Voltage (Voc)	49.04V	46.19V	49.14V	46.28V	49.24V	46.38V	49.34V	46.47V	49.44V	46.57V
Short-circuit Current (Isc)	12.89A	10.41A	12.98A	10.48A	13.07A	10.56A	13.16A	10.63A	13.25A	10.70A
Module Efficiency STC (%)	20.40%		20.60%		20.81%		21.01%		21.21%	
Operating Temperature(°C)	-40°C~+85°C									
Maximum system voltage	1500VDC (IEC)									
Maximum series fuse rating	25A									
Power tolerance	0~+3%									
Temperature coefficients of Pmax	-0.35%/°C									
Temperature coefficients of Voc	-0.28%/°C									
Temperature coefficients of Isc	0.048%/°C									
Nominal operating cell temperature (NOCT)	45±2°C									
Refer. Bifacial Factor	70±5%									

BIFACIAL OUTPUT-REAR SIDE POWER GAIN

		530Wp	536Wp	541Wp	546Wp	551Wp
5%	Maximum Power (Pmax)	530Wp	536Wp	541Wp	546Wp	551Wp
	Module Efficiency STC (%)	21.42%	21.64%	21.85%	22.06%	22.27%
15%	Maximum Power (Pmax)	581Wp	587Wp	592Wp	598Wp	604Wp
	Module Efficiency STC (%)	23.46%	23.70%	23.93%	24.16%	24.39%
25%	Maximum Power (Pmax)	631Wp	638Wp	644Wp	650Wp	656Wp
	Module Efficiency STC (%)	25.50%	25.76%	26.01%	26.26%	26.51%

* STC: Irradiance 1000W/m² Cell Temperature 25°C

AM=1.5

NOCT: Irradiance 800W/m² Ambient Temperature 20°C

AM=1.5

Wind Speed 1m/s

* Power measurement tolerance: $\pm 3\%$

©2020 Jinko Solar Co., Ltd. All rights reserved.

Specifications included in this datasheet are subject to change without notice.

TR JKM505-525M-7TL4-TV-D4-EN