

IBS72M PERC

KEY FEATURES

20 years
Product
Warranty

25 years
Performance
Warranty



Cell efficiency
up to **21.1 %**



Module
efficiency up
to **19.1 %**



Heavy snow load
up to **5,400 Pa**



Wind load
up to **2,400 Pa**



PID Free



ELECTRICAL PARAMETERS

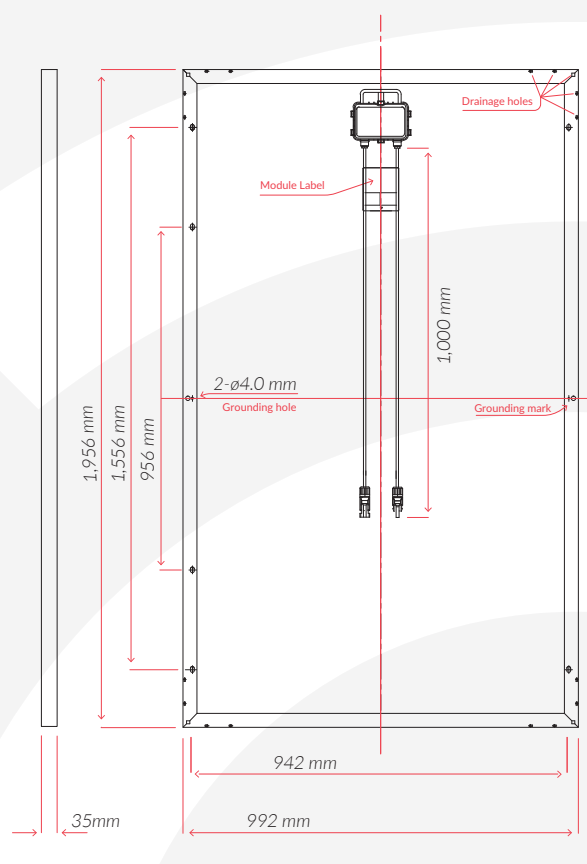
Model	IBS72M	
Maximum Power (Pmax/W)	375	380
Operating Voltage (V _{mpp} /V)	39.6	39.8
Operating Current (I _{mpp} /A)	9.47	9.55
Open-Circuit Voltage (V _{oc} /V)	48.2	48.4
Short-Circuit Current (I _{sc} /A)	9.92	9.99
Module Efficiency η _m (%)	19.33	19.58
Power Tolerance	0+5 Wp	
NOCT	47°C±2°C	

Values at Standard Test Conditions STC (AM 1.5, Irradiance 1000 W/m², Cell Temperature 25°C)

SPECIFICATIONS

Cell Type	Mono Crystalline PERC
Cells size	156,75x156,75 mm
Number of cells	72
Weight	20.5 kg
Front side glass	3,2 mm hardened solar tempered glass
Dimensions	1,956x992x35 mm
Cable length	1,000 mm
Cable cross section size	4 mm ²
Number of bypass diodes	3
Connectors	MC4 compatible
Frame	Anodized Aluminium Alloy
Junction Box	IP67

ENGINEERING DRAWINGS



WORKING CONDITIONS

Maximum System Voltage	DC 1,000 V (IEC) / 1,500 V available
Operating temperature	-40°C / +85° C
Maximum reverse current	15A
IP protection level	IP65
Safety class	II

TEMPERATURE COEFFICIENTS

Power temperature coefficient (Pmax)	-0,38 %/°C
Voltage temperature coefficient (Voc)	-0,29 %/°C
Current temperature coefficient (Isc)	+0,052 %/°C



PACKAGING INFORMATION (I)

Pallet dimension	2,010/1,120/1,130 mm
Pallet weight	640 kg
Modules/pallet	30

PACKAGING INFORMATION (II)

Container	20 GP	40 HQ (I)	40 HQ (II)
Pallets per container	10	24	24
Pieces per container	300	720	780

PARTNERS